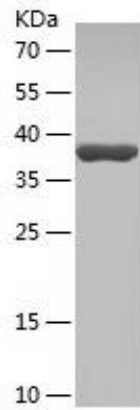


Recombinant Human CCNE2

Catalogue No.:	P2440
Species:	Human
Uniprot ID:	O96020
Expression Region:	1-141
Host:	E.Coli
Tags:	N-terminal His-IF2DI Tag
Molecular Weight:	37.2 kDa under reducing conditions
Purity:	Greater than 90% as determined by SDS-PAGE
Formulation:	Lyophilized from a 0.2 μ m filtered solution in 10 mM Hepes, 500 mM NaCl with 5% trehalose, pH7.4
Reconstitution:	Centrifuge the vial at 10,000 rpm for 1 minute, reconstitute at 200 μ g/ml in sterile distilled water by gentle pipetting 2-3 times, don't vortex
Storage:	-20°C for 12 months as lyophilized; 2-8°C for 1 month under sterile conditions after reconstitution
Synonyms:	CCNE2, CYCE2, cyclin E2, G1/S specific cyclin E2

SDS-PAGE:



Safety note:

This product is intended for research and manufacturing uses only. It is not a diagnostic device. Product degradation will result from multiple freeze/thaw cycles. It is suggested that the antigen be stored in use size aliquots and thawed just prior to use. This material has been inactivated, however as with all biological materials, it should be handled as potentially infectious. The user assumes all responsibility for care, custody and control of the material, including its disposal, in accordance with all regulations.