

anti- Albumin antibody

Product Information

Catalog No.:	FNab00279
Size:	100µg
Form:	liquid
Purification:	Protein A+G purification
Purity:	≥95% as determined by SDS-PAGE
Host:	Mouse
Clonality:	monoclonal
Clone ID:	8A4
IsoType:	IgG2a
Storage:	PBS with 0.02% sodium azide and 50% glycerol pH 7.3, -20°C for 12 months (Avoid repeated freeze / thaw cycles.)

Background

Albumin is the most abundant protein in blood plasma. Alterations of level of serum albumin are linked to variety of diseases. Albumin is expressed exclusively by well-differentiated hepatocytes, thus anti-albumin has been used to mark hepatocytes.

Immunogen information

Immunogen:	albumin
Synonyms:	Alb, albumin, Serum albumin
Observed MW:	69 kDa
Uniprot ID :	P02768

Application

Reactivity:	Human
Tested Application:	ELISA, IHC, IF, WB, IP
Recommended dilution:	WB: 1:5000-1:50000; IHC: 1:20-1:200; IP: 1:2000-1:20000; IF: 1:20-1:200

Wuhan Fine Biotech Co., Ltd.

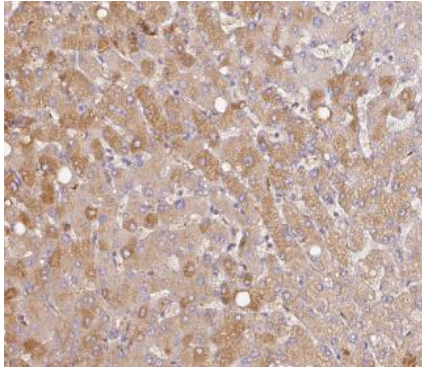
B9 Bld, High-Tech Medical Devices Park, No. 818 Gaoxin Ave. East Lake High-Tech Development Zone. Wuhan, Hubei, China(430206)

Tel : (0086)027-87384275

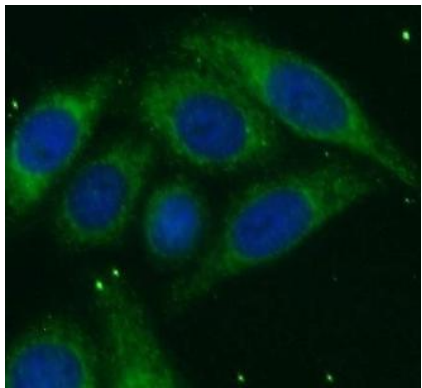
Fax: (0086)027-87800889

www.fn-test.com

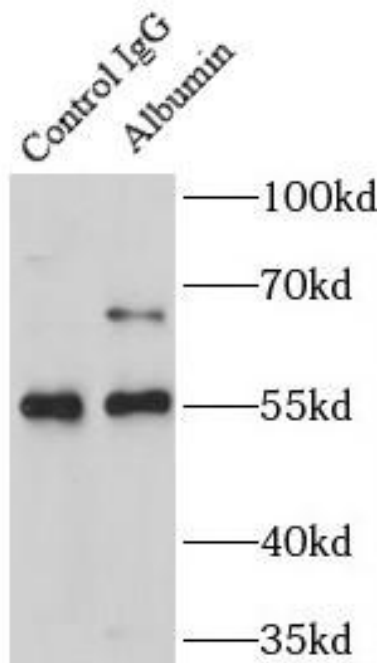
Image:



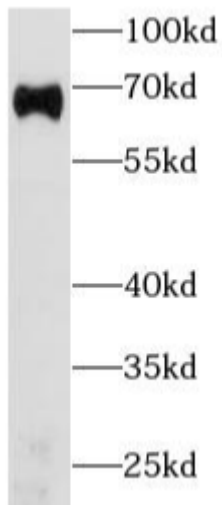
Immunohistochemistry of paraffin-embedded human liver using FNab00279(ALB antibody) at dilution of 1:50



Immunofluorescent analysis of HepG2 cells using FNab00279 (Albumin antibody) at dilution of 1:50 and Alexa Fluor 488-conjugated Goat Anti-Mouse IgG(H+L)



IP Result of anti-Albumin (IP:FNab00279, 4ug; Detection:FNab00279 1:10000) with human plasma lysate 4000ug.



human plasma(diluted 5000 fold) was subjected to SDS PAGE followed by western blot with FNab00279(Albumin Antibody) at dilution of 1:10000